

## Car Wash – Metro-North New Haven Rail Yard New Haven, CT

### Project Description:

**Location**

New Haven, CT

**Owner**

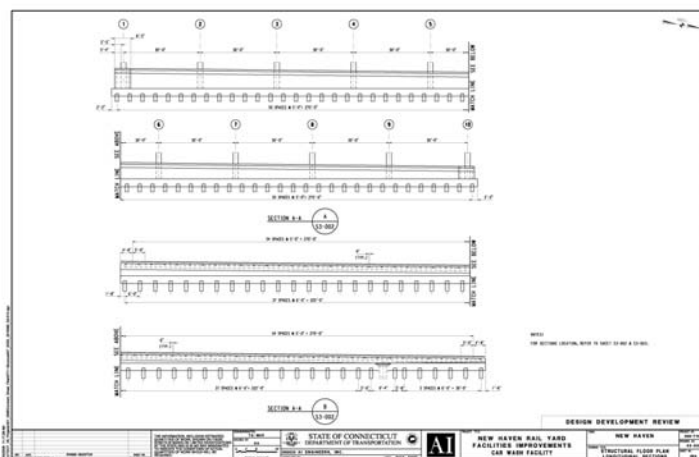
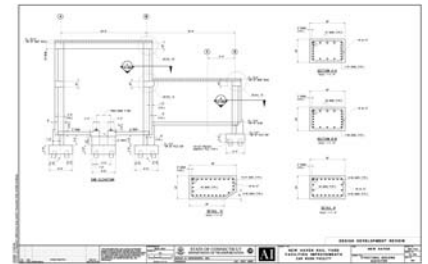
ConnDOT

**Completion**

2007

AI Engineers, Inc. worked as a primary subconsultant to Parsons Brinckerhoff and provided structural, mechanical, electrical, plumbing and fire protection design services for the design of a new 270' by 60' building to house an automated rail car wash system. AI worked with PB, an outside architect and other engineering consultants in the course of the design work, which was a portion of an \$800 million Metro-North Rail Yard Improvement project.

AI's work included design of a precast concrete pile foundation system, grade beams and slabs for a precast plank roof supported on precast concrete walls and columns, as well as design of mechanical, electrical, plumbing and fire protection systems and components for the building.



### Salient Features

- Structural design and analysis of foundations
- Mechanical, Electrical, Plumbing and fire protection design